



# 2026 GUIDE SOYBEAN



# Brevant, Still and Always

## What is and will always be

Brevant is a high-performance seed brand that provides industry-leading genetics and technology to soybean farming. Brevant seeds draws on the strengths of Corteva Agriscience, built on 100 years of ag experience, science and support.

### **Our goal**

Brevant seeds is dedicated to providing best-in-class soybeans through your local retail network.

### **Our offer**

Brevant seeds offers industry-leading genetics, technology, and traits from Corteva Agriscience.

## So what's new?

Since July 2024, Altoya Seeds is the exclusive designated partner for Brevant® seeds - SOYBEAN in Eastern Canada. Same great products, new team of dedicated experts to support the dealers and the producers. With nearly half a century of experience in the soybean culture industry, you can expect the best of service and expertise from the Altoya Seeds team. Product availability, development and distribution is no longer in the care of Corteva, but Altoya, a 100% Canadian company.

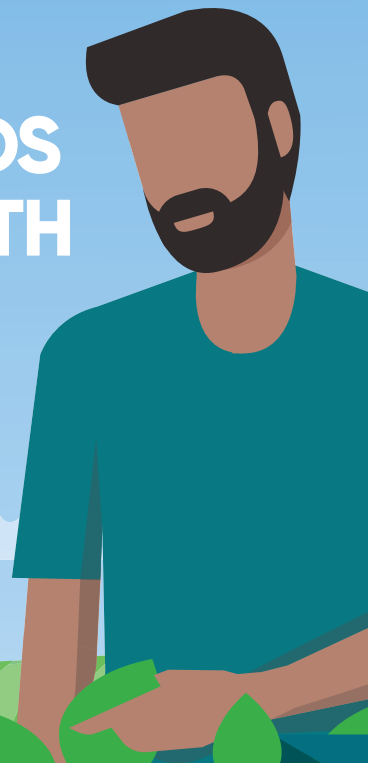
**Make sure to put us to the test!**  
**We know what we are talking about!**

See you on the field!

Kelly, Dan and the Altoya Seeds team



# MANAGING PROBLEM WEEDS IN ENLIST E3™ SOYBEANS WITH A PROGRAM APPROACH



THE PROGRAM APPROACH is a **two-pass system** that uses Multiple Modes of Action to effectively control weeds and manage herbicide resistance in **Enlist E3™ soybeans**.

Weed	Modes of Action	Preplant or Pre-emergence with Residual Activity	Post-emergence up to R1 or R2	Benefits
Canada fleabane (glyphosate resistant)	2,4,5,9,10	Canopy™ PRO herbicide Apply as a burndown with glyphosate and a second effective mode of action	Enlist™ 1 + Liberty® 200 SN* OR Enlist 1 + glyphosate	Canada fleabane currently has no known resistance to Group 4 or Group 10 herbicides. Wide application window helps control late flushes.
Waterhemp (glyphosate resistant)	2,4,14 with 9 (glyphosate) or 10 (Liberty)	Diligent™ herbicide	Enlist 1 + glyphosate OR Enlist 1 + Liberty® 200 SN*	Save Groups 4,9,10 for second pass. Waterhemp populations are currently susceptible to both Enlist™ herbicide options.
Field Horsetail	2,4,9	Broadstrike RC + glyphosate + Enlist 1	Enlist 1 + glyphosate	2 effective modes of action on field horsetail (groups 2 and 4). Option for a 2nd in-crop application of Enlist 1. Excellent opportunity to manage this weed in a soybean crop

**Enlist herbicides come with Colex-D™ technology for near-zero volatility and low drift**

**Enlist herbicides** are critical tools enabling post-emergence control, without fear of off-target movement.

Talk with your retailer or download and use the **Field Guide app** to identify solutions for your farming operation.

Learn more at [enlistcanada.ca](https://enlistcanada.ca)

\* \* Trademarks of Corteva Agriscience and its affiliated companies. © 2024 Corteva.  
The transgenic soybean event in Enlist E3™ soybeans is jointly developed and owned by Corteva Agriscience and M.S. Technologies L.L.C.  
LIBERTY is a registered trade-mark of BASF, used under license by BASF Canada Inc. © 2023 BASF Canada Inc.  
Enlist Duo™ and Enlist™ 1 are the only 2,4-D products authorized for use with Enlist™ crops. Consult Enlist herbicide labels for weed species controlled.  
Always read and follow label directions.



## B0073EE

2450 CHU (RM 0.07) E3



- Outstanding Harvest Standability
- Solid field emergence
- Superior performance in fields with SCN presence

**Phytophthora Gene :** 1C **Hila Color : Imperfect Brown**

**Plant Height for Maturity :** 4 **SCN Source : Peking**

Harvest Standability	1	2	3	4	5	6	7	8	9
Field Emergence	1	2	3	4	5	6	7*	8	9
Phytophthora Field Tolerance	1	2	3	4	5*	6	7	8	9
White Mould	1	2	3	4	5	6	7	8	9
Sudden Death Syndrome	1	2	3	4	5	6	7	8	9
Canopy Width	1	2	3	4	5	6	7	8	9

## B036CE

2600 CHU (RM 0.3) E3



- Excellent Harvest Standability
- Impressive Field Emergence
- Variety has an overall sound agronomic package

**Phytophthora Gene :** 1K **Hila Color : Brown**

**Plant Height for Maturity :** 4 **SCN Source : PI88788**

Harvest Standability	1	2	3	4	5	6	7	8	9
Field Emergence	1	2	3	4	5	6	7	8	9
Phytophthora Field Tolerance	1	2	3	4	5*	6	7	8	9
White Mould	1	2	3	4	5	6	7	8	9
Sudden Death Syndrome	1	2	3	4*	5	6	7	8	9
Canopy Width	1	2	3	4	5	6	7	8	9

## B054EE

2650 CHU (RM 0.5) E3



- Great white mould tolerance
- RPS 1k for *Phytophthora* and great field tolerance for relative maturity
- Strong yield performance paired with great agronomic package

**Phytophthora Gene :** 1K **Hila Color : Brown**

**Plant Height for Maturity :** 3 **SCN Source : PI88788**

Harvest Standability	1	2	3	4	5	6	7	8	9
Field Emergence	1	2	3	4	5	6	7	8	9
Phytophthora Field Tolerance	1	2	3	4	5	6*	7	8	9
White Mould	1	2	3	4	5	6	7	8	9
Sudden Death Syndrome	1	2	3	4	5	6*	7	8	9
Canopy Width	1	2	3	4	5	6	7	8	9



"B036CE provides top end yield on the productive acre, with an earlier maturity allowing for timely wheat seeding."

Nick Zicvic,  
Sharpes Farm Supply

\*The views expressed here are based on field observations, not scientifically proven agronomic data.



## B074HE

2700 CHU (RM 0.7) E3



- Reliable Standability & Emergence
- Medium-bushy soybean well adapted to wide or narrow rows

**Phytophthora Gene :** 1C **Hila Color :** Brown

**Plant Height for Maturity :** 4 **SCN Source :** NA

**Harvest Standability** 1 2 3 4 5 6 7 8 9

**Field Emergence** 1 2 3 4 5 6 7 8 9

**Phytophthora Field Tolerance** 1 2 3 4 5\* 6 7 8 9

**White Mould** 1 2 3 4 5 6 7 8 9

**Sudden Death Syndrome** 1 2 3\* 4 5 6 7 8 9

**Canopy Width** 1 2 3 4 5 6 7 8 9

## B095EE

2775 CHU (RM 1.0) E3



- Elite combination of standability and emergence
- Strong canopy coverage for wide rows
- Exciting new high yield 0.9 RM variety with leading agronomics

**Phytophthora Gene :** 1K **Hila Color :** Brown

**Plant Height for Maturity :** 4 **SCN Source :** PI88788

**Harvest Standability** 1 2 3 4 5 6 7 8\* 9

**Field Emergence** 1 2 3 4 5 6 7 8 9

**Phytophthora Field Tolerance** 1 2 3 4 5\* 6 7 8 9

**White Mould** 1 2 3 4 5 6 7 8 9

**Sudden Death Syndrome** 1 2 3 4 5 6 7\* 8 9

**Canopy Width** 1 2 3 4 5 6 7 8 9

## B103EE

2775 CHU (RM 1.0) E3



- Very good tolerance to white mould and brown stem rot
- Very good standability for high-yield environments
- Nice plant stature with average plant height and good canopy closure

**Phytophthora Gene :** 1K **Hila Color :** Tawny

**Plant Height for Maturity :** 4 **SCN Source :** PI88788

**Harvest Standability** 1 2 3 4 5 6 7 8 9

**Field Emergence** 1 2 3 4 5 6 7\* 8 9

**Phytophthora Field Tolerance** 1 2 3 4 5\* 6 7 8 9

**White Mould** 1 2 3 4 5 6 7 8 9

**Sudden Death Syndrome** 1 2 3 4 5 6 7 8 9

**Canopy Width** 1 2 3 4 5 6 7 8 9



"Brevant's B103EE is the early RM workhorse of the lineup. It delivers strong performance across a wide range of conditions and is a reliable choice for high-pressure white mould environments."

**Daniel DeMoissac,**  
District Sales Manager – Eastern Ontario,  
Québec and Maritimes

\*The views expressed here are based on field observations, not scientifically proven agronomic data.



NEW

# B135EE

2850 CHU (RM 1.3) E3



- Great option for the high fertility acre
- Exciting New 1.3 RM variety with top level white mould
- Peking SCN resistance provides an attractive alternative in cyst areas

**Phytophthora Gene :** 1K **Hila Color :** Black

**Plant Height for Maturity :** 4 **SCN Source :** Peking

Harvest Standability	1	2	3	4	5	6	7	8*	9
Field Emergence	1	2	3	4	5	6	7	8	9
Phytophthora Field Tolerance	1	2	3	4	5	6*	7	8	9
White Mould	1	2	3	4	5	6	7	8	9
Sudden Death Syndrome	1	2	3	4	5	6*	7	8	9
Canopy Width	1	2	3	4	5	6*	7	8	9

# B144EE

2875 CHU (RM 1.4) E3



- Impressive yield performance
- Great emergence and standability
- Wider canopy width makes this product highly suitable for wide row production

**Phytophthora Gene :** 1K **Hila Color :** Brown

**Plant Height for Maturity :** 4 **SCN Source :** PI88788

Harvest Standability	1	2	3	4	5	6	7	8	9
Field Emergence	1	2	3	4	5	6	7	8	9
Phytophthora Field Tolerance	1	2	3	4	5*	6	7	8	9
White Mould	1	2	3	4	5	6	7	8	9
Sudden Death Syndrome	1	2	3	4*	5	6	7	8	9
Canopy Width	1	2	3	4	5	6	7	8	9

# B173EE

2950 CHU (RM 1.7) E3



- Multi-gene *Phytophthora* 1K, 3A gene stack
- Stable yield potential, sound agronomics and good overall defensive traits
- Medium-bushy soybean well adapted to wide or narrow rows

**Phytophthora Gene :** 1K 3A **Hila Color :** Brown

**Plant Height for Maturity :** 5 **SCN Source :** PI88788

Harvest Standability	1	2	3	4	5	6	7	8	9
Field Emergence	1	2	3	4	5	6	7	8	9
Phytophthora Field Tolerance	1	2	3	4	5	6	7	8	9
White Mould	1	2	3	4	5	6	7	8	9
Sudden Death Syndrome	1	2	3	4	5	6	7	8	9
Canopy Width	1	2	3	4	5	6	7	8	9

Altoya Seeds, the exclusive designated partner for Brevant® SOYBEAN in Eastern Canada, is 100% Canadian Owned and Family Operated.



## B182ME

2975 CHU (RM 1.8) E3



- Impressive yield performance with Peking SCN resistance
- Outstanding Emergence
- Bushy plant excels on finer textured soils

**Phytophthora Gene :** 1K **Hila Color :** Black

**Plant Height for Maturity :** 5 **SCN Source :** Peking

Harvest Standability	1	2	3	4	5	6	7	8	9
Field Emergence	1	2	3	4	5	6	7	8	9
Phytophthora Field Tolerance	1	2	3	4*	5	6	7	8	9
White Mould	1	2	3	4	5	6	7	8	9
Sudden Death Syndrome	1	2	3	4	5	6	7	8	9
Canopy Width	1	2	3	4	5	6	7	8	9

## B185EE

2975 CHU (RM 1.8) E3



- Industry Leading harvest standability
- Very strong white mould tolerance
- Brings excellent yield potential for maturity

**Phytophthora Gene :** 1K **Hila Color :** Brown

**Plant Height for Maturity :** 5 **SCN Source :** PI88788

Harvest Standability	1	2	3	4	5	6	7	8	9*
Field Emergence	1	2	3	4	5	6	7	8	9
Phytophthora Field Tolerance	1	2	3	4	5	6	7*	8	9
White Mould	1	2	3	4	5	6	7	8	9
Sudden Death Syndrome	1	2	3	4	5*	6	7	8	9
Canopy Width	1	2	3	4	5	6*	7	8	9

## B214EE

3050 CHU (RM 2.1) E3



- Strong standability for acres prone to lodging
- Robust canopy and good plant height
- Incredible yield performance + Peking SCN

**Phytophthora Gene :** 1K **Hila Color :** Brown

**Plant Height for Maturity :** 5 **SCN Source :** Peking

Harvest Standability	1	2	3	4	5	6	7	8	9
Field Emergence	1	2	3	4	5	6	7	8	9
Phytophthora Field Tolerance	1	2	3	4*	5	6	7	8	9
White Mould	1	2	3	4	5	6	7	8	9
Sudden Death Syndrome	1	2	3	4	5	6*	7	8	9
Canopy Width	1	2	3	4	5	6	7	8	9



"B182ME is our go-to Brevant Bean for the sandy ground around Scotland, ON."

Noelle Adams,  
Scotland Agromart

\*The views expressed here are based on field observations, not scientifically proven agronomic data.





# B243EE

3125 CHU (RM 2.4) E3



- Elite Yield Potential at any Productivity Level
- Featuring Peking SCN resistance and great white mould tolerance
- Broad acre variety with sound agronomics, excels on heavy clay

**Phytophthora Gene :** 1K **Hila Color :** Brown

**Plant Height for Maturity :** 5 **SCN Source :** Peking

Harvest Standability	1	2	3	4	5	6	7	8	9
Field Emergence	1	2	3	4	5	6	7*	8	9
Phytophthora Field Tolerance	1	2	3	4*	5	6	7	8	9
White Mould	1	2	3	4	5	6*	7	8	9
Sudden Death Syndrome	1	2	3	4	5	6	7	8	9
Canopy Width	1	2	3	4	5	6	7	8	9

# B289TE

3200 CHU (RM 2.7) E3



- Medium plant type with great standability
- Featuring Peking SCN source
- Strong performance across yield environments

**Phytophthora Gene :** 1K **Hila Color :** Black

**Plant Height for Maturity :** 4 **SCN Source :** Peking

Harvest Standability	1	2	3	4	5	6	7	8	9
Field Emergence	1	2	3	4	5	6	7	8	9
Phytophthora Field Tolerance	1	2	3*	4	5	6	7	8	9
White Mould	1	2	3	4	5	6	7	8	9
Sudden Death Syndrome	1	2	3	4	5	6	7	8	9
Canopy Width	1	2	3	4	5	6	7	8	9

# B283EE

3250 CHU (RM 2.9) E3



- Highly suitable for sudden death syndrome prone environments
- Outstanding Emergence
- Provides great SDS field tolerance

**Phytophthora Gene :** 1K **Hila Color :** Black

**Plant Height for Maturity :** 5 **SCN Source :** PI88788

Harvest Standability	1	2	3	4	5	6	7	8	9
Field Emergence	1	2	3	4	5	6	7	8	9
Phytophthora Field Tolerance	1	2	3	4*	5	6	7	8	9
White Mould	1	2	3	4	5	6	7	8	9
Sudden Death Syndrome	1	2	3	4	5	6	7	8	9
Canopy Width	1	2	3	4	5	6	7	8	9



"B243EE is our #1 bean from the Brevant Lineup. Its Tried and True."

Boby Ball,  
Sylvite

\*The views expressed here are based on field observations, not scientifically proven agronomic data.



## SOYBEAN FOOTNOTES

All Brevant products denoted with ™ are brand names. Ratings denoted by double digits reflect preliminary data subject to change when additional data becomes available.

**IMPORTANT:** Trait ratings provide key information useful in selection and management of Corteva products in your area. Scores are based on testing through 2024 harvest and were the latest available at time of printing. Some scores may change after 2025 harvest. Information and ratings are based on average performance across area of adaptation under normal conditions, over a wide range of both climate and soil types and may not predict future results.

**TECHNOLOGY SEGMENT:** Enlist Duo™ and Enlist™ 1 are the only 2,4-D products authorized for use with Enlist™ crops. Consult Enlist herbicide labels for weed species controlled. Always read and follow label directions.

**NUMERIC RATINGS:** 9 = Excellent; 1 = Poor; Blank = Insufficient Data or variety not tested for that particular trait.

### ALWAYS READ AND FOLLOW PESTICIDE LABEL

**DIRECTIONS.** Roundup Ready® technology contains genes that confer tolerance to glyphosate, an active ingredient in Roundup® brand agricultural herbicides. Agricultural herbicides containing glyphosate will kill crops that are not tolerant to glyphosate.

Corteva Agriscience is a member of Excellence Through Stewardship® (ETS). Corteva Agriscience products are commercialized in accordance with ETS Product Launch Stewardship Guidance and in compliance with the Corteva Agriscience policies regarding stewardship of those products. In line with these guidelines, our product launch process for responsible launches of new products includes a longstanding process to evaluate export market information, value chain consultations, and regulatory functionality. Growers and end-users must take all steps within their control to follow appropriate stewardship requirements and confirm their buyer's acceptance of the grain or other material being purchased. For more detailed information on the status of a trait or stack, please visit [www.biotradestatus.com](http://www.biotradestatus.com). Excellence Through Stewardship® is a registered trademark of Excellence Through Stewardship. The transgenic soybean event in Enlist E3™ soybeans is jointly developed and owned by Corteva Agriscience and M.S. Technologies L.L.C.

**RELATIVE MATURITY:** Shows the relative maturity group rating, with the digits preceding the decimal representing the general maturity group, and the digit following the decimal showing relative maturity within the group on a scale of 0 to 9, with 0 early and 9 late. For example, a soybean product with a relative maturity rating of 1.8 would be a late product in Group 1 maturity.

**FIELD EMERGENCE:** Rating based on speed and strength of emergence in sub-optimal temperatures. 1-3 = Below Average; 4-6 = Average; 7-9 = Excellent.

### PHYTOPHTHORA RESISTANCE GENE:

**Blank** = No specific gene for resistance.

**RPS1<sup>AA</sup>** = Contains Rps1c or Rps1k Phytophthora resistance

**RPS 1A** = Provides resistance to races 1, 2, 10, 11, 13-18, 24, 26, 27, 31, 32, 36, 38, 48, 50-52, 54-55.

**RPS 1C** = Provides resistance to races 1-3, 6-11, 13, 15, 17, 21, 23, 24, 26, 28-30, 32, 34, 36, 38, 41, 42, 44, 48, 50, 52, 54, 55.

**RPS 1K** = Provides resistance to races 1-11, 13-15, 17, 18, 21-24, 26, 36-38, 42-44, 46-55.

**RPS 6** = Provides resistance to races 1-4, 10, 12, 14-16, 18-21, 25, 28, 33-35, 38-48, 52-54.

**RPS 3A** = Resistant to races 1-5, 8-9, 11, 13-14, 16, 18, 23, 25, 28-29, 31-35, 39-41, 43-45, 47-52, 54.

**RPS 3C** = Resistant to races 1-4, 10-16, 18-36, 38-54.

**PHYTOPHTHORA FIELD TOLERANCE:** Products with high tolerance scores have demonstrated an ability to thrive in the presence of Phytophthora races to which they lack specific resistance. In some products, tolerance is expressed only after the early seedling growth stage, making such products susceptible to damping off during emergence and early seed growth.

**BROWN STEM ROT:** **HT** = Highly Tolerant; **MT** = Moderately Tolerant; **MS** = Moderately Susceptible.

**WHITE MOULD:** Scores based on Corteva research observations of comparative white mold tolerance among various soybean products across multiple locations and years. All products are capable of developing white mold symptoms under severe infestations. To our knowledge, there are no totally resistant products in the industry. However, differences exist in the ability of products to tolerate white mold (i.e., the rate at which the infection develops and the extent of damage it causes). These scores reflect those differences.

**SCN RESISTANCE SOURCE:** There are three sources of genetic resistance to SCN currently deployed in the marketplace: PI88788; PI548402 (also known as Peking); PI437654 (also known as Hartwig); **R** = Resistant to SCN but the source of that resistance is not yet identified.

**SCN RESISTANCE SOURCE:** There are three sources of genetic resistance to SCN currently deployed in the marketplace: PI88788; PI548402 (also known as Peking); PI437654 (also known as Hartwig); **R** = Resistant to SCN but the source of that resistance is not yet identified. PI88788 provides good to excellent resistance to race 3 and average to excellent resistance to race 14. Peking provides very good to excellent resistance to races 1, 3, and 5. Peking<sup>^</sup> provides excellent resistance to race 3 and below average to average resistance to race 5.

**CANOPY WIDTH:** 9 = Extremely bushy; 1 = Very narrow.

**PLANT HEIGHT FOR MATURITY:** 9 = Tall; 1 = Short.

**HILA COLOR:** **BL** = Black; **BR** = Brown; **TN** = Tan; **G** = Gray; **IB** = Imperfect black; **BF** = Buff; **Y** = Yellow (Clear); **M** = Mixed.



Brevant® Brand Variety	Technology Segment	Relative Maturity	Crop Heat Units	Harvest Standability	Field Emergence	Phytophthora Gene	Phytophthora Field Tolerance	White Mould	Sudden Death Syndrome	SCN Source	Canopy Width	Plant Height for Maturity	Hila Colour
RATINGS													
<b>B0073EE™</b>		0.07	2450	8	7*	1C	5*	5		Peking	4	4	IMP BR
<b>B036CE™</b>		0.3	2600	8	8	1K	5*	4	4*	PI88788	5	4	BR
<b>B054EE™</b>		0.5	2650	7	7	1K	6*	6	6*	PI88788	6	3	BR
<b>B074HE™</b>		0.7	2700	7	7	1C	5*	5	3*		5	4	BR
<b>B095EE™</b> <span>NEW</span>		1.0	2775	8*	8	1K	5*	5	7*	PI88788	7	4	BR
<b>B103EE™</b>		1.0	2775	7	7*	1K	5*	6	3	PI88788	4	4	TN
<b>B135EE™</b> <span>NEW</span>		1.3	2850	8*	7	1K	6*	6	6*	Peking	6*	4	BL
<b>B144EE™</b>		1.4	2875	7	7	1K	5*	4	4*	PI88788	6	4	BR
<b>B173EE™</b>		1.7	2950	7	8	1K / 3A		4	5	PI88788	6	5	BR
<b>B182ME™</b>		1.8	2975	7	8	1K	4*	5	6	Peking	7	5	BL
<b>B185EE™</b> <span>NEW</span>		1.8	2975	9*	7	1K	7*	6	5*	PI88788	6*	5	BR
<b>B214EE™</b>		2.1	3050	6	6	1K	4*	4	6*	Peking	6	5	BR
<b>B243EE™</b>		2.4	3125	8	7*	1K	4*	6*	6	Peking	6	5	BR
<b>B289TE™</b>		2.7	3200	6	6	1K	3*	3	5	Peking	5	4	BL
<b>B283EE™</b>		2.9	3250	6	7	1K	4*	4	6	PI88788	5	5	BL

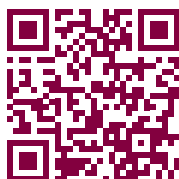
## NOTES

For complete definitions and disclaimers related to product descriptions, characteristics ratings and disease ratings, and all other information contained herein

\* Ratings denoted with an asterisk (\*) reflect preliminary data subject to change when additional data becomes available.

NEW

Our varieties  
online



Visit our website! **Altoya.com**



## Daniel DeMoissac

District Sales Manager, Eastern Ontario, Quebec & Maritimes

[daniel.demoissac@altoyaseeds.com](mailto:daniel.demoissac@altoyaseeds.com)

613 888-9148

## Kelly Consitt

District Sales Manager, Western Ontario

[kelly.consitt@altoyaseeds.com](mailto:kelly.consitt@altoyaseeds.com)

519 617-9598

# Altoya

semences — seeds

145, rang du Bas-de-la-Rivière Nord  
Saint-Césaire (Québec)  
J0L 1T0 Canada

[ALTOYA.COM](http://ALTOYA.COM)

Brevant® seeds brand products are provided subject to the terms and conditions of purchase which are part of the labelling and purchase documents.



TM ® Trademarks of Corteva Agriscience and its affiliated companies. © 2025 Corteva. | 0224-16864  
PRINTED IN CANADA